



# DEWATERING TRENCHER

## UNEARTH THE POWER

The Wolfe Dewatering Trencher features a chain with a maximum depth of 19ft [580cm] & cut width of 12" [30cm].

## STATE-OF-THE-ART TECHNOLOGY AND COMFORT

### MODERN CAB DESIGN

AIR RIDE SEAT

DIGITAL CLIMATE CONTROL

GPS/AUTO STEER READY

ERGONOMIC MACHINE CONTROLS

3ft REMOVABLE BOOM SECTION

### OPTIMAL MACHINE COOLING

The machine cooling system is designed with variable speed reversing fans. The variable speed fans help reduce fuel consumption while the auto / manual reversing feature makes for easy cleaning when operating in dusty conditions

### OSCILLATING TRACKS & 7° SIDE TILT

Both tracks move separately from one another ensuring optimal balance and traction while providing a smoother ride for the operator. The side tilt feature automatically or manually keeps the boom vertical ensuring a precise grade on sloped terrain.

### UNDER HOOD ACCESSIBILITY

The hoods are designed with extra clearance when open for easy maintenance access to the engine and hydraulics.

### REEL CARRIER (OPTION)

The compact design has the ability to be folded up for easy transportation and quick field-ready transitions.

### CENTRAL LUBE STATION (OPTION)

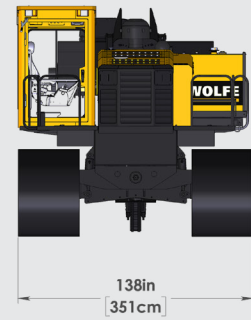
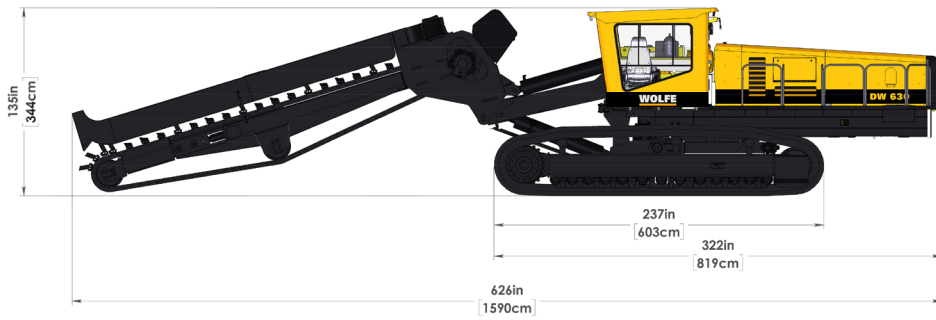
Allows safer and easier greasing from central locations. An auto-lube feature is available to reduce manual maintenance while ensuring that all lube points are getting the proper amount of grease.

### OUTPUT/PRODUCTIVITY CONTROL

An adaptive, on-the-go control system designed to enable automatic ground speed control during installation. This System relies on engine loads and system pressures to change the ground speed to compensate for variations in soil condition that the operator can not see.

Wolfe Heavy Equipment is a powerful agricultural and commercial trenching manufacturer committed to providing superior engineering and expert service. Wolfe trenchers are proven to hold grade in even the toughest conditions. UNEARTH THE POWER.

# WOLFE



## STANDARD EQUIPMENT FEATURES

### UNDER HOOD ACCESSIBILITY

### 630HP CAT™ C-18 ENGINE

### AIR RIDE SEAT

### GPS/AUTO STEER READY

### ERGONOMIC MACHINE CONTROLS

### WOLFE EQUIPMENT APP ↓

#### Two-Speed Drive System

1<sup>ST</sup> Max: 88 ft/min [1.6km/h]

2<sup>nd</sup> Max: 274 ft/min [5km/h]

C/W Programmable Dig Mode

Proportional Hydraulics

58 Link Tracks available with standard or extreme pads

GPS and Laser ready

Dual or Single Stick Track Control System

A/C and Heated cabs C/W digital climate control

Side mounted cabs to increase the visibility of the work zone and sight line while driving

Engine cooling system with auto/manual reversing fans for cleaning during operation in dusty conditions

Highest ground clearance in the industry

Built-in air compressor

Digging Boom capable of depths from 11ft to 19ft

C/W 3ft Removable Boom Section

Machine Weight:

Approx. 86,000lbs [39, 280kg]

Auto Idle

Engine Block Heater

Oscillating Track

7° Tilt Frame C/W Auto Sensing

Web App

Remote Connectivity

## OPTIONAL EQUIPMENT ADD-ONS

### COMPACT REEL CARRIER

### AUTO/MANUAL LUBE MANIFOLD

### CUSTOM COLOURS AVAILABLE

### EXTENDED GROUSER BARS

### HYDRAULIC OIL PRE-HEATER

### OPTIONAL SHOE WIDTHS

### CABLE TOW SYSTEM

### CAMERAS AND VIEW MONITORS

### LIGHTS

### GPS AND LASER SYSTEMS

### CARBIDE CUTTING TEETH

